

# EZ-View® Flow Meters

## For Oil, Water, Air & Compressed Gases

- 1/2 to 1 inch ports
- EZ to install, in any position
- No special piping or flow straighteners needed
- No electrical connections
- Direct reading indication
- Accuracy within  $\pm 5\%$  full scale
- Relatively insensitive to shock and vibration

### SPECIFICATIONS:

#### MATERIALS:

Polysulfone plastic body, piston and cone  
 T300-series stainless spring  
 Buna N flow indicator ring and pressure seals  
 C360 Brass, PVC, or T303 stainless fittings  
 Polypropylene limit indicators  
 PH15 – 7MO stainless retaining ring  
 Optional: Teflon® coated spring and retaining ring, consult factory.

**FITTINGS/ THREADS:** NPT ANSI/ASME B1.20.1, BSPT ISO228

See Ordering Information Table, page 5

**TEMPERATURE RANGE:** 32 °F to 250 °F (0 °C to 121 °C)

**PRESSURE RATING:** Liquid: 325 psi / 22.4 bar maximum;

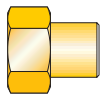
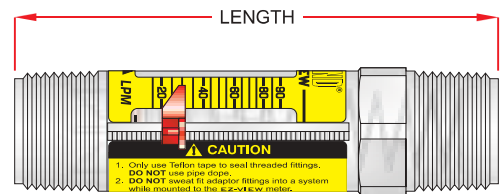
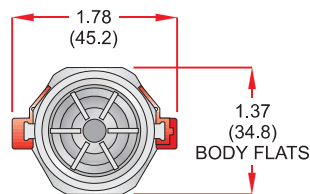
Air/Gases: 125 psi / 8.6 bar maximum

**PRESSURE DROP:** See Differential Pressure Charts, page 64

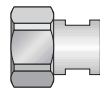
**ACCURACY:**  $\pm 5\%$  of full scale

**REPEATABILITY:**  $\pm 1\%$

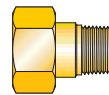
**DIMENSIONS:** See Ordering Information Table, page 64



1/2" NPTF/BSPT female, swivel brass fitting



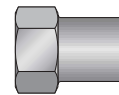
1/2" NPTF female, swivel T303 SS fitting



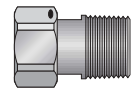
3/4" NPTF/BSPT male, swivel brass fitting



3/4" or 1" swivel, sweat brass fitting



1" nominal socket weld PVC fitting

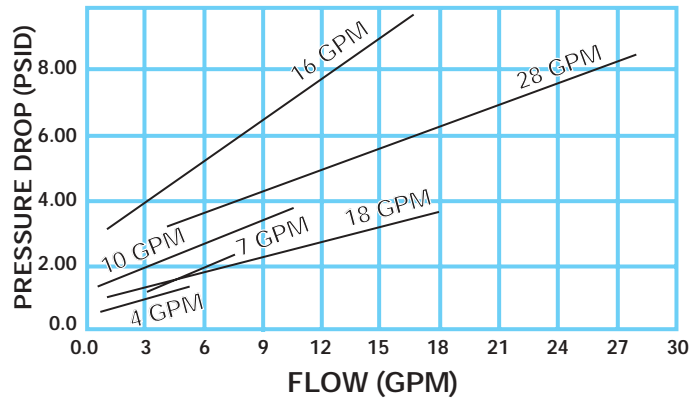


1" NPTF male, swivel PVC fitting

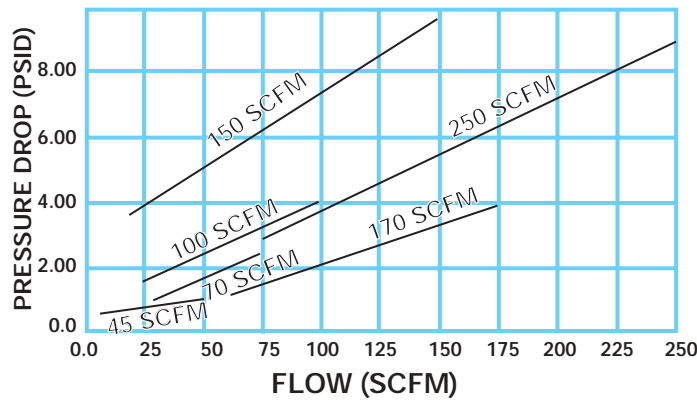
# EZ-View® Flow Meters

## For Oil, Water, Air & Compressed Gases

### OIL & WATER METERS



### AIR METERS



### Ordering Information

Fluid Media	Flow Range		1/2" NPTF female, swivel brass fitting	1/2" NPTF female, swivel T303 SS fitting	1/2" BSPT female, swivel brass fitting	3/4" NPTF male, swivel brass fitting	3/4" BSPT male, swivel brass fitting	3/4 or 1 inch <sup>①</sup> nominal, sweat brass fitting swivel	1" NPTF <sup>②</sup> male, plastic polysulfone fitting	1" nominal <sup>③</sup> socket weld PVC fitting	1" NPTF male, swivel PVC fitting
			H624-104	H626-104	H627-104	H625-104	H630-104	H620-004	H621-104	H628-104	H629-104
Oil 0.876 s.g.	0.5 – 4 GPM	2 – 15 LPM	H624-104	H626-104	H627-104	H625-104	H630-104		H621-104	H628-104	H629-104
	1.0 – 7 GPM	4 – 26 LPM	H624-107	H626-107	H627-107	H625-107	H630-107		H621-107	H628-107	H629-107
	1.0 – 10 GPM	4 – 35 LPM	H624-110	H626-110	H627-110	H625-110	H630-110		H621-110	H628-110	H629-110
	1.0 – 16 GPM	5 – 60 LPM	H624-116	H626-116	H627-116	H625-116	H630-116		H621-116	H628-116	H629-116
	3.0 – 18 GPM	15 – 65 LPM				H625-118	H630-118		H621-118	H628-118	H629-118
4.0 – 28 GPM	20 – 100 LPM				H625-128	H630-128		H621-128	H628-128	H629-128	
Water 1.0 s.g.	0.5 – 4 GPM	2 – 15 LPM	H624-004	H626-004	H627-004	H625-004	H630-004	H620-004	H621-004	H628-004	H629-004
	1.0 – 7 GPM	4 – 26 LPM	H624-007	H626-007	H627-007	H625-007	H630-007	H620-007	H621-007	H628-007	H629-007
	1.0 – 10 GPM	4 – 35 LPM	H624-010	H626-010	H627-010	H625-010	H630-010	H620-010	H621-010	H628-010	H629-010
	1.0 – 16 GPM	5 – 60 LPM	H624-016	H626-016	H627-016	H625-016	H630-016	H620-016	H621-016	H628-016	H629-016
	3.0 – 18 GPM	15 – 65 LPM				H625-018	H630-018	H620-018	H621-018	H628-018	H629-018
4.0 – 28 GPM	20 – 100 LPM				H625-028	H630-028	H620-028	H621-028	H628-028	H629-028	
Air 1.0 s.g.	10 – 45 SCFM	5 – 20 LPS	H624-204	H626-204	H627-204	H625-204	H630-204		H621-204		H629-204
	20 – 70 SCFM	10 – 30 LPS	H624-207	H626-207	H627-207	H625-207	H630-207		H621-207		H629-207
	25 – 100 SCFM	15 – 45 LPS	H624-210	H626-210	H627-210	H625-210	H630-210		H621-210		H629-210
	30 – 150 SCFM	20 – 70 LPS	H624-216	H626-216	H627-216	H625-216	H630-216		H621-216		H629-216
	55 – 170 SCFM	30 – 80 LPS				H625-218	H630-218		H621-218		H629-218
75 – 250 SCFM	35 – 110 LPS				H625-228	H630-228		H621-228		H629-228	
DIMENSIONS:	Length <sup>④</sup> in (mm)		7.75 (196.8)	7.75 (196.8)	7.75 (196.8)	8.25 (209.5)	8.25 (209.5)	7.75 (196.8)	5.25 (133.3)	8.46 (214.9)	8.86 (225.0)
	Fitting Flats in (mm)		1.50 (38.1)	1.50 (38.1)	1.50 (38.1)	1.50 (38.1)	1.50 (38.1)	1.50 (38.1)	N/A	1.54 (39.1)	1.50 (38.1)
	Weight lb (kg)		0.95 (0.43)	0.85 (0.39)	0.95 (0.43)	0.90 (0.41)	0.90 (0.41)	0.75 (0.34)	0.20 (0.09)	0.35 (0.16)	0.55 (0.25)

① Fits 3/4" copper tube types K, L, M; 1" copper tube type M only.

② DO NOT use pipe dope. Use Teflon® tape only. Use with plastic pipe fittings only.

③ Fits 1" Sch 40/80 PVC, CPVC pipe. Requires 1" pipe coupling.

④ Length includes end fittings.